

1550

**KLENGEL**

**TECHNICAL STUDIES**

**FOR CELLO**

**VOLUME I**

**(LEONARD ROSE)**



No. 1597

**INTERNATIONAL MUSIC COMPANY**

**NEW YORK**

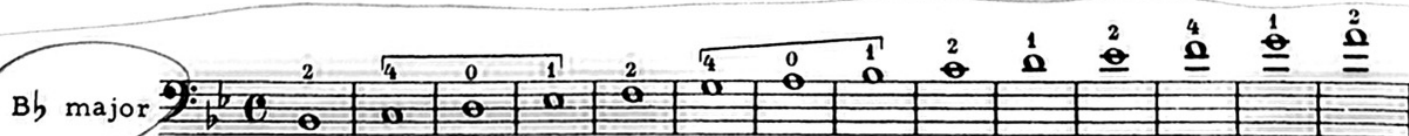
for Cello

(A)

## Scales in two octaves

Edited by LEONARD ROSE

JULIUS KLENDEL  
(1859-1933)



G minor

E♭ major

C minor

A♭ major

F minor

D♭ major

The image displays a page of musical notation for guitar, specifically focusing on bass clef staves. The page is numbered '2' in the top left corner. It contains six systems of musical notation, each representing a different key signature. The first system is labeled 'G minor' and is circled. The subsequent systems are labeled 'E♭ major', 'C minor', 'A♭ major', 'F minor', and 'D♭ major'. Each system consists of a single bass clef staff with a key signature of two flats (B♭ and E♭). The notation includes various musical symbols such as whole notes, half notes, and quarter notes, along with fingerings indicated by numbers 1 through 4. Some notes are marked with a '4' above them, possibly indicating a fourth fret or a specific fingering. The page is numbered '1597' at the bottom left.

B $\flat$  minor

First system of the B $\flat$  minor scale. The top staff shows the ascending scale with fingerings: 1, 3, 4, 1, 2, 4, 0, 1, 2, 1, 2, 4, 1, 2. The bottom staff shows the descending scale with fingerings: 3, 2, 1, 4, 2, 1, 4, 2, 1, 4, 3, 1, 4, 3, 1. A trill is marked on the final note of the ascending scale.

F $\sharp$  major

First system of the F $\sharp$  major scale. The top staff shows the ascending scale with fingerings: 1, 2, 4, 1, 2, 4, 1, 2, 4, 1, 2, 4, 1, 3. The bottom staff shows the descending scale with fingerings: 4, 3, 1, 4, 2, 1, 4, 2, 1, 4, 2, 1, 4, 2, 1.

E $\flat$  minor

First system of the E $\flat$  minor scale. The top staff shows the ascending scale with fingerings: 1, 3, 4, 1, 2, 4, 0, 1, 2, 1, 2, 4, 1, 3. The bottom staff shows the descending scale with fingerings: 4, 2, 1, 4, 2, 1, 4, 3, 1, 4, 3, 1, 4, 3, 1.

B major

First system of the B major scale. The top staff shows the ascending scale with fingerings: 1, 2, 4, 1, 2, 4, 1, 2, 4, 1, 2, 4, 1, 2. The bottom staff shows the descending scale with fingerings: 3, 2, 1, 4, 2, 1, 4, 2, 1, 4, 2, 1, 4, 2, 1.

G $\sharp$  minor

First system of the G $\sharp$  minor scale. The top staff shows the ascending scale with fingerings: 1, 3, 4, 1, 2, 4, 1, 2, 4, 1, 2, 4, 1, 3. The bottom staff shows the descending scale with fingerings: 4, 2, 1, 4, 2, 1, 4, 3, 1, 4, 3, 1, 4, 3, 1.

E major

First system of the E major scale. The top staff shows the ascending scale with fingerings: 1, 2, 4, 1, 2, 4, 1, 2, 4, 1, 2, 4, 1, 3. The bottom staff shows the descending scale with fingerings: 4, 3, 1, 4, 2, 1, 4, 2, 1, 4, 2, 1, 4, 2, 1. A trill is marked on the final note of the ascending scale.



C# minor

1 3 4 1 2 4 1 2 4 1 2 4 1 3

A musical staff in bass clef with a key signature of two sharps (F# and C#). The melody consists of quarter notes with the following fingerings indicated above them: 4, 2, 1, 4, 2, 1, 4, 2, 1, 4, 3, 1, 4, 3, 1. The notes are: G2 (4), F#2 (2), E2 (1), D2 (4), C2 (2), B1 (1), A1 (4), G1 (2), F#1 (1), E1 (4), D1 (3), C1 (1), B1 (4), A1 (3), G1 (1).

A major

1 2 4 0 1 2 4 0 1 3 4 1 2 4

F# minor

D major

Musical notation for the bass line of 'The Rose Tree'. The key signature is one sharp (F#). The melody consists of the following notes (octaves are indicated by numbers above the notes):

Measure	Notes (Octave)
1	F#4, E4
2	D4, C4
3	B3, A3
4	G3, F#3
5	E3, D3
6	C3, B2
7	A2, G2
8	F#2, E2
9	D2, C2
10	B1, A1
11	G1, F#1
12	E1, D1
13	C1, B0
14	A0, G0
15	F#0, E0
16	D0, C0
17	B0, A0
18	G0, F#0
19	E0, D0
20	C0, B0
21	A0, G0
22	F#0, E0
23	D0, C0
24	B0, A0
25	G0, F#0
26	E0, D0
27	C0, B0
28	A0, G0
29	F#0, E0
30	D0, C0
31	B0, A0
32	G0, F#0
33	E0, D0
34	C0, B0
35	A0, G0
36	F#0, E0
37	D0, C0
38	B0, A0
39	G0, F#0
40	E0, D0
41	C0, B0
42	A0, G0
43	F#0, E0
44	D0, C0
45	B0, A0
46	G0, F#0
47	E0, D0
48	C0, B0
49	A0, G0
50	F#0, E0
51	D0, C0
52	B0, A0
53	G0, F#0
54	E0, D0
55	C0, B0
56	A0, G0
57	F#0, E0
58	D0, C0
59	B0, A0
60	G0, F#0
61	E0, D0
62	C0, B0
63	A0, G0
64	F#0, E0
65	D0, C0
66	B0, A0
67	G0, F#0
68	E0, D0
69	C0, B0
70	A0, G0
71	F#0, E0
72	D0, C0
73	B0, A0
74	G0, F#0
75	E0, D0
76	C0, B0
77	A0, G0
78	F#0, E0
79	D0, C0
80	B0, A0
81	G0, F#0
82	E0, D0
83	C0, B0
84	A0, G0
85	F#0, E0
86	D0, C0
87	B0, A0
88	G0, F#0
89	E0, D0
90	C0, B0
91	A0, G0
92	F#0, E0
93	D0, C0
94	B0, A0
95	G0, F#0
96	E0, D0
97	C0, B0
98	A0, G0
99	F#0, E0
100	D0, C0
101	B0, A0
102	G0, F#0
103	E0, D0
104	C0, B0
105	A0, G0
106	F#0, E0
107	D0, C0
108	B0, A0
109	G0, F#0
110	E0, D0
111	C0, B0
112	A0, G0
113	F#0, E0
114	D0, C0
115	B0, A0
116	G0, F#0
117	E0, D0
118	C0, B0
119	A0, G0
120	F#0, E0
121	D0, C0
122	B0, A0
123	G0, F#0
124	E0, D0
125	C0, B0
126	A0, G0
127	F#0, E0
128	D0, C0
129	B0, A0
130	G0, F#0
131	E0, D0
132	C0, B0
133	A0, G0
134	F#0, E0
135	D0, C0
136	B0, A0
137	G0, F#0
138	E0, D0
139	C0, B0
140	A0, G0
141	F#0, E0
142	D0, C0
143	B0, A0
144	G0, F#0
145	E0, D0
146	C0, B0
147	A0, G0
148	F#0, E0
149	D0, C0
150	B0, A0
151	G0, F#0
152	E0, D0
153	C0, B0
154	A0, G0
155	F#0, E0
156	D0, C0

B minor

Musical notation for the bass line of 'The Rose Tree'. The key signature is one sharp (F#). The notation includes fingerings (3, 2, 1, 4, 2, 1, 1/4, 2, 1, 1/4, 3, 1, 0, 4, 2) and a 'II<sup>A</sup>' marking.

G major

A musical staff in bass clef with a key signature of one sharp (F#). The melody consists of quarter notes with fingerings indicated above them: 4, 3, 1, 4, 2, 1, 0, 4, 3, 1, 0, 4, 3, 1, 0. The notes are: F#2, E2, D2, C2, B1, A1, G1, F#2, E2, D2, C2, B1, A1, G1, F#2.

E minor

### Bowings for scales of two octaves



1. separate bow d (vib)
2. separate bow d (vib)
3. Slur (vib) Triads through two octaves
4. Slur (No vib)

Arpeggiating  
with repeat ♯

# B Section

7

C major

a minor

F major

d minor

Bb major

g minor

Eb major

c minor

Ab major

f minor

Db major

bb minor

F# major

eb minor

B major

g# minor

E major

c# minor

A major

f# minor

D major

b minor

G major

e minor



① separate bow (vib)

② " (No vib)

③ Scales in thirds of two octaves (broken thirds)

④ slur

slur





F# major V III<sup>a</sup> II<sup>a</sup> I<sup>a</sup>

eb minor V III<sup>a</sup> II<sup>a</sup> I<sup>a</sup>

B major V II<sup>a</sup> I<sup>a</sup>

g# minor V II<sup>a</sup> I<sup>a</sup>

E major V III<sup>a</sup> II<sup>a</sup> I<sup>a</sup>

c# minor V III<sup>a</sup> II<sup>a</sup> I<sup>a</sup> II<sup>a</sup>

A major V

f# minor V III<sup>a</sup> II<sup>a</sup> I<sup>a</sup> II<sup>a</sup> III<sup>a</sup>

D major

b minor V II<sup>a</sup> I<sup>a</sup>

G major V

e minor V III<sup>a</sup> II<sup>a</sup> I<sup>a</sup>